



# City of Miami Gardens- Strategies for Economic Development

*Daniel A. Rosemond*

Assistant City Manager/Community  
Development Director



# Quick Facts about CMG

- Incorporated in May 2003
- 107,167 residents (3<sup>rd</sup> largest in Miami Dade County)
- 20 square miles in size
- 34,284 housing units (71% homeownership rate)
- 20 parks (over 200 Acres of park open park space)
- Median Household income is \$ 41,744 (County median income is \$42,969)
- 24 public schools
- National crime ranking- 40<sup>th</sup>
- Vehicular Traffic – Annual average daily traffic

Palmetto Expressway

• More than 130,000

SR7/US 441

• 36001 to 70,000

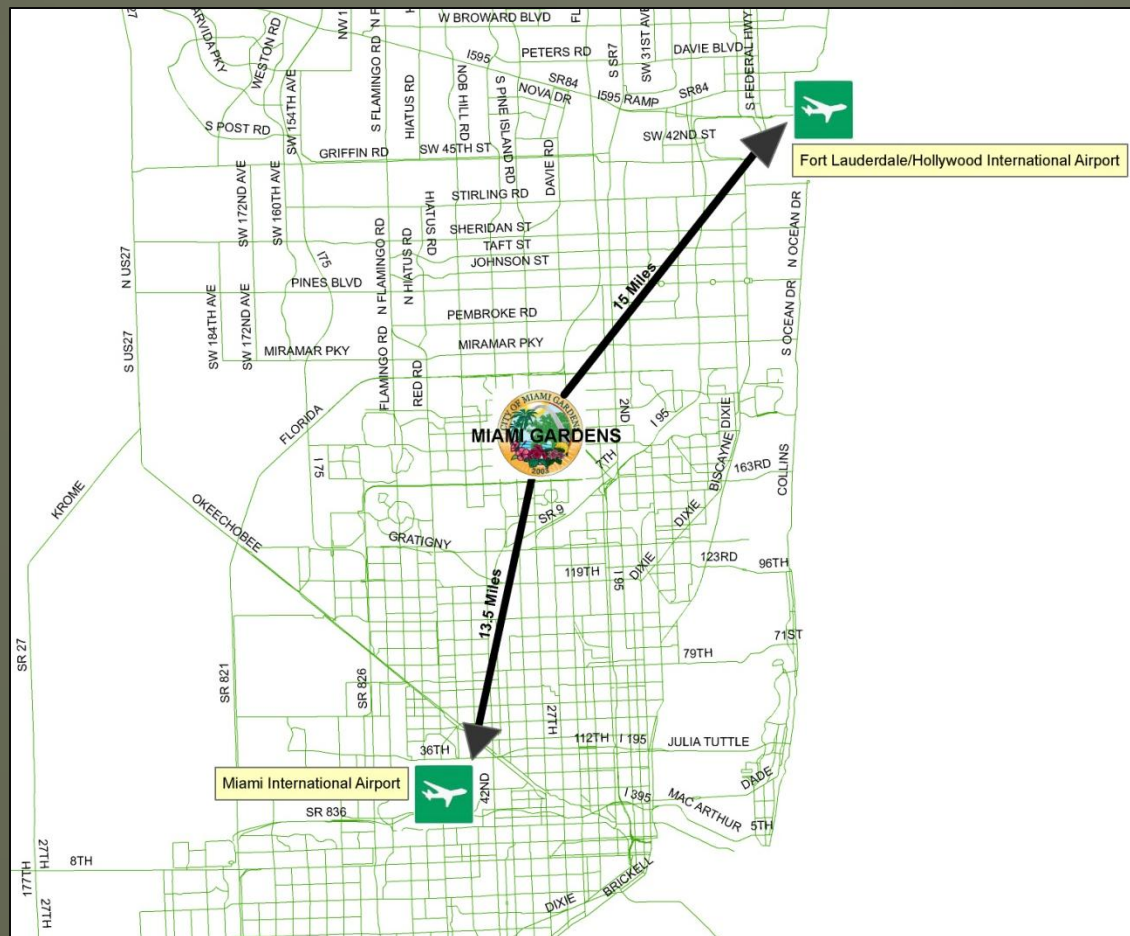
NW 27<sup>th</sup> Avenue

• 36001 to 70,000



# Economic Assets

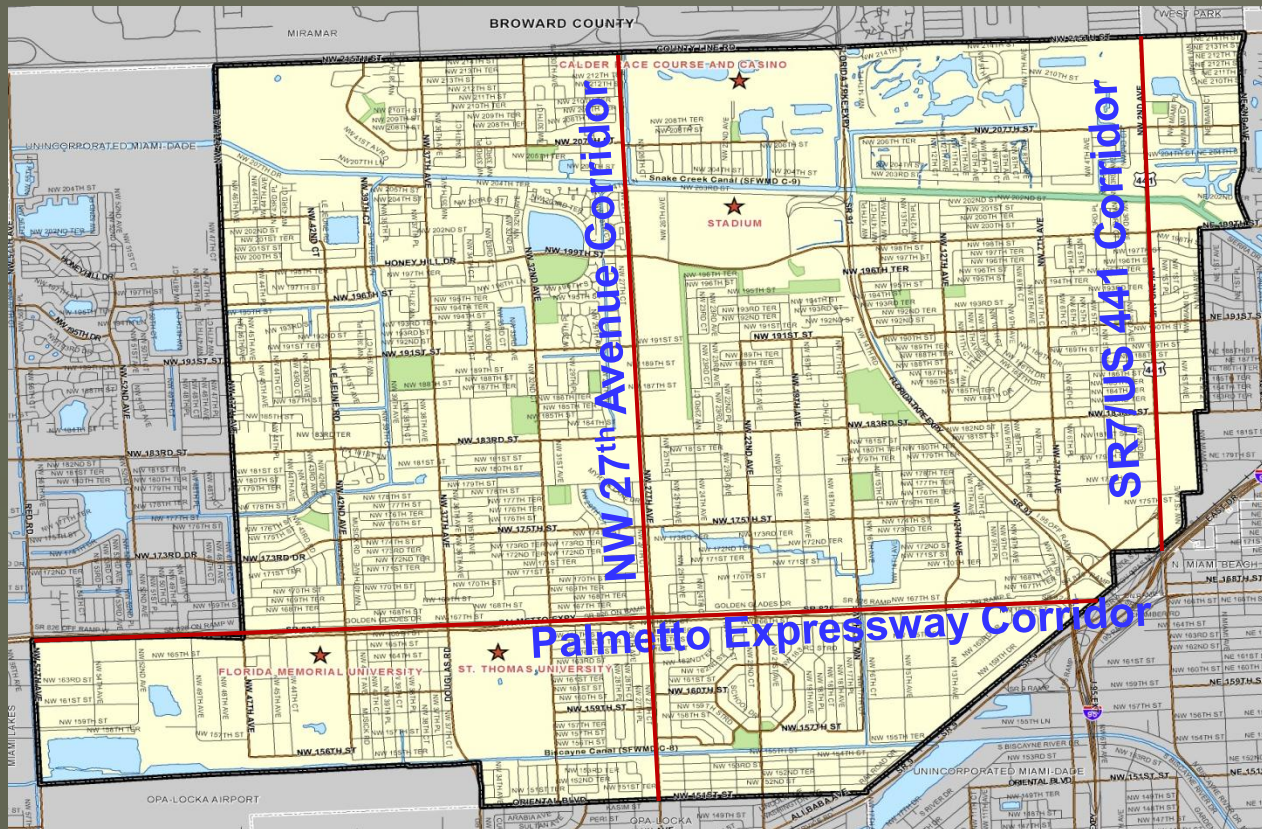
## Location, location, location





# Economic Assets

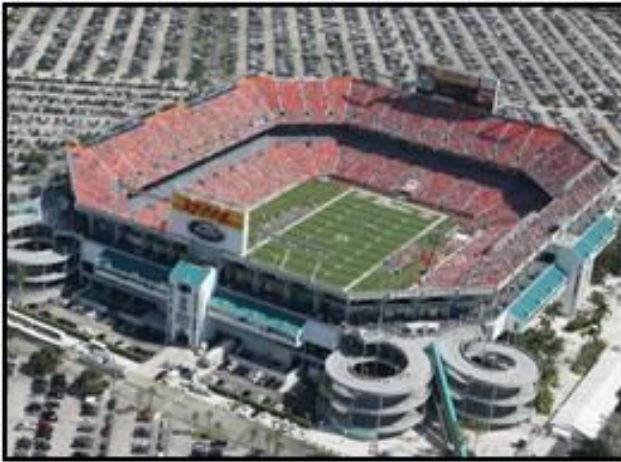
- Easy access to major expressways
- 3 major business corridors





# Economic Assets

- Over 3,300 businesses
  - Sun Life Stadium
  - Calder Racetrack & Casino





# Economic Assets

- 2 universities
- 2 industrial parks, over 400 acres



**Local communities need to know their assets and continually market them to the business community**



## City efforts that can yield long-term results

---

- Develop and maintain business friendly culture at City Hall
- Formalize an economic development strategy
- Establish alliances that will further economic vision
- Make investments that will stimulate private sector presence in your community



# New City Hall Complex - Miami Gardens



MUNICIPAL COMPLEX VIEW FROM 27<sup>th</sup> Ave





# Concluding thoughts

---

- ◉ Local leaders must face the harsh reality
- ◉ Doing nothing is not an option
- ◉ Competition among local communities and states is a growing trend
- ◉ Economic development efforts must be different than in the past