

The logo for FIU Metropolitan Center, featuring the letters 'FIU' in a bold, blue, blocky font with a yellow outline. A vertical yellow line is positioned to the right of the letters.

**FIU**

**Metropolitan  
Center**

FLORIDA INTERNATIONAL UNIVERSITY

---

*Celebrating 20 Years*

Improving Public Policy and Quality of Life in South Florida

South Florida's leading "think tank" since 1997

# Our Senior Staff



Howard Frank,  
Director



Ned Murray,  
Associate Director



Maria Ilcheva,  
Senior Research  
Associate



Jeanette Jacques,  
Training  
Coordinator



Kevin Greiner,  
Senior Fellow



Ralph Rosado,  
Senior Fellow

❖ Senior Leadership has 100+ years of experience in economic development strategic planning, affordable housing needs assessments, survey research, & public opinion analysis.

# Area Needs and Challenges

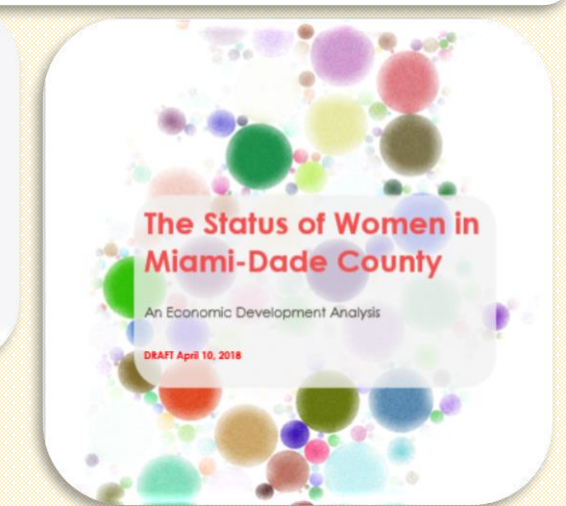
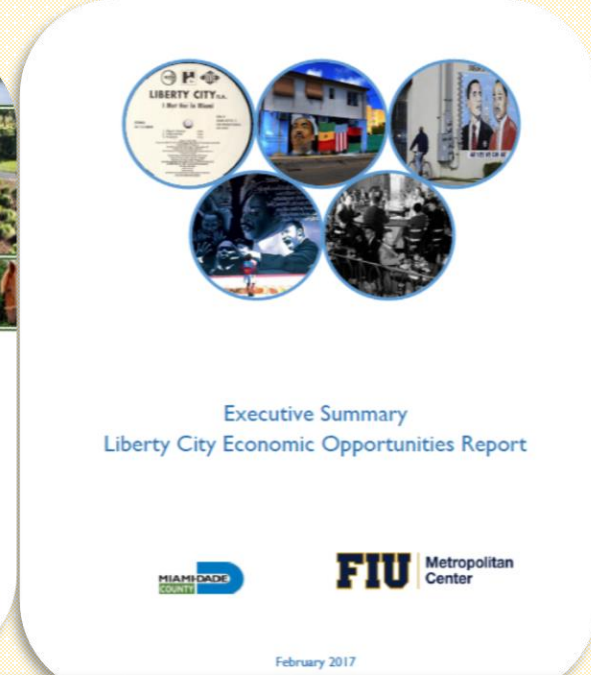
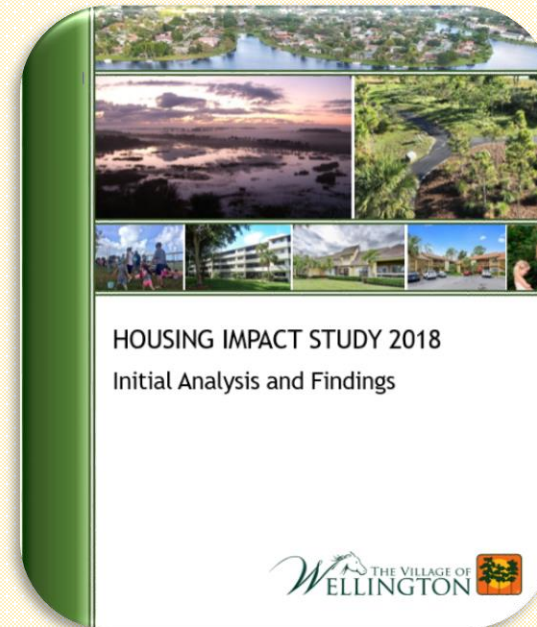
- ❖ **The Economy**
  - ◆ Focus on Economic Stability, Opportunity, Mobility and Equity
  - ◆ Sustainable Economies = Sustainable Communities
- ❖ **Community Development**
  - ◆ Focus on Neighborhoods
  - ◆ Building a Local Institutional Support Infrastructure
- ❖ **Quality of Life**
  - ◆ Access to Quality Jobs, Affordable Housing, Healthcare and Education
  - ◆ Safe and Connected Neighborhoods
- ❖ **The Environment**
  - ◆ Climate Change/Rising Sea Levels
  - ◆ Environmental Justice
- ❖ **Transportation**
  - ◆ Walkable, Healthy Communities
  - ◆ Equitable Transit-Oriented Development (ETOD)



# Our Core Areas

## ❖ Economic and Housing Market Analysis

- ◆ a holistic and integrated approach to community economic development that integrates traditional concerns for economic base expansion with a special focus on income equality, wealth creation, affordable housing, human capital development and institutional capacity building
- ◆ build stakeholder consensus in developing practical economic development policies
- ◆ use of public and proprietary databases, and visualization techniques, including GIS

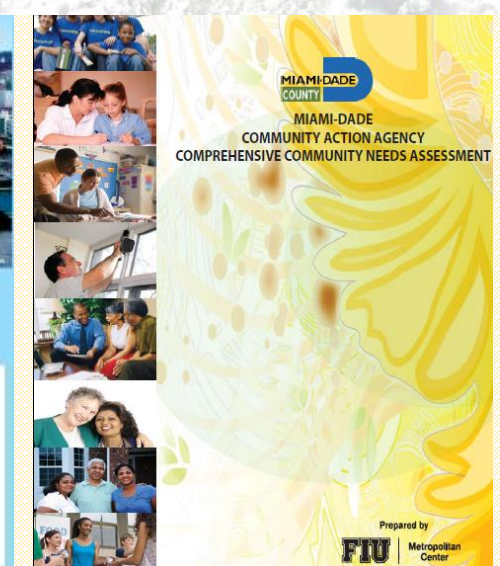
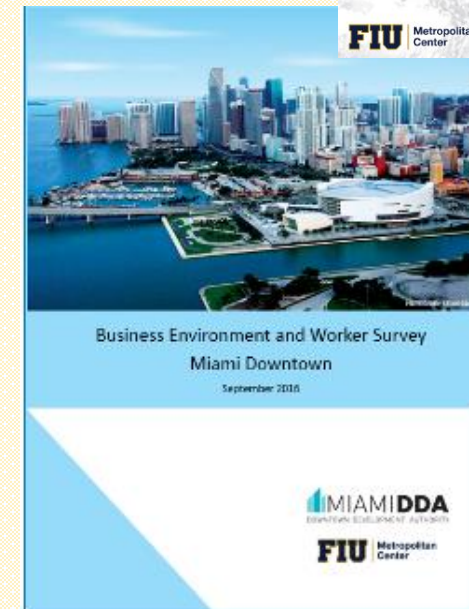
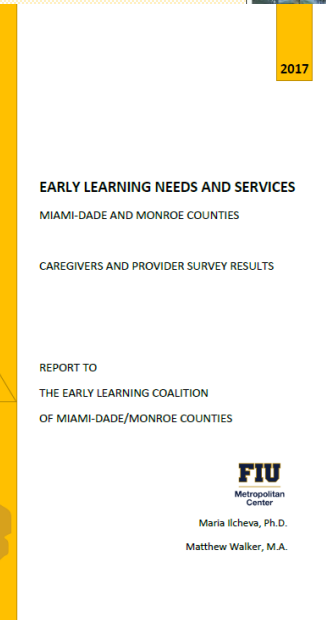


# Our Core Areas

## ❖ Survey and Opinion Research

- ◆ quantitative and qualitative public opinion research, including multilingual surveys, focus groups, in-person interviews and mystery shops
- ◆ Assess service needs, opinions on initiatives and public policies
- ◆ supply local governments, community organizations, and businesses with feedback on customer service and satisfaction
- ◆ develop recommendations for improvements in public policy and delivery of services to address pressing community needs

## MIAMI BEACH CONVENTION CENTER HOTEL



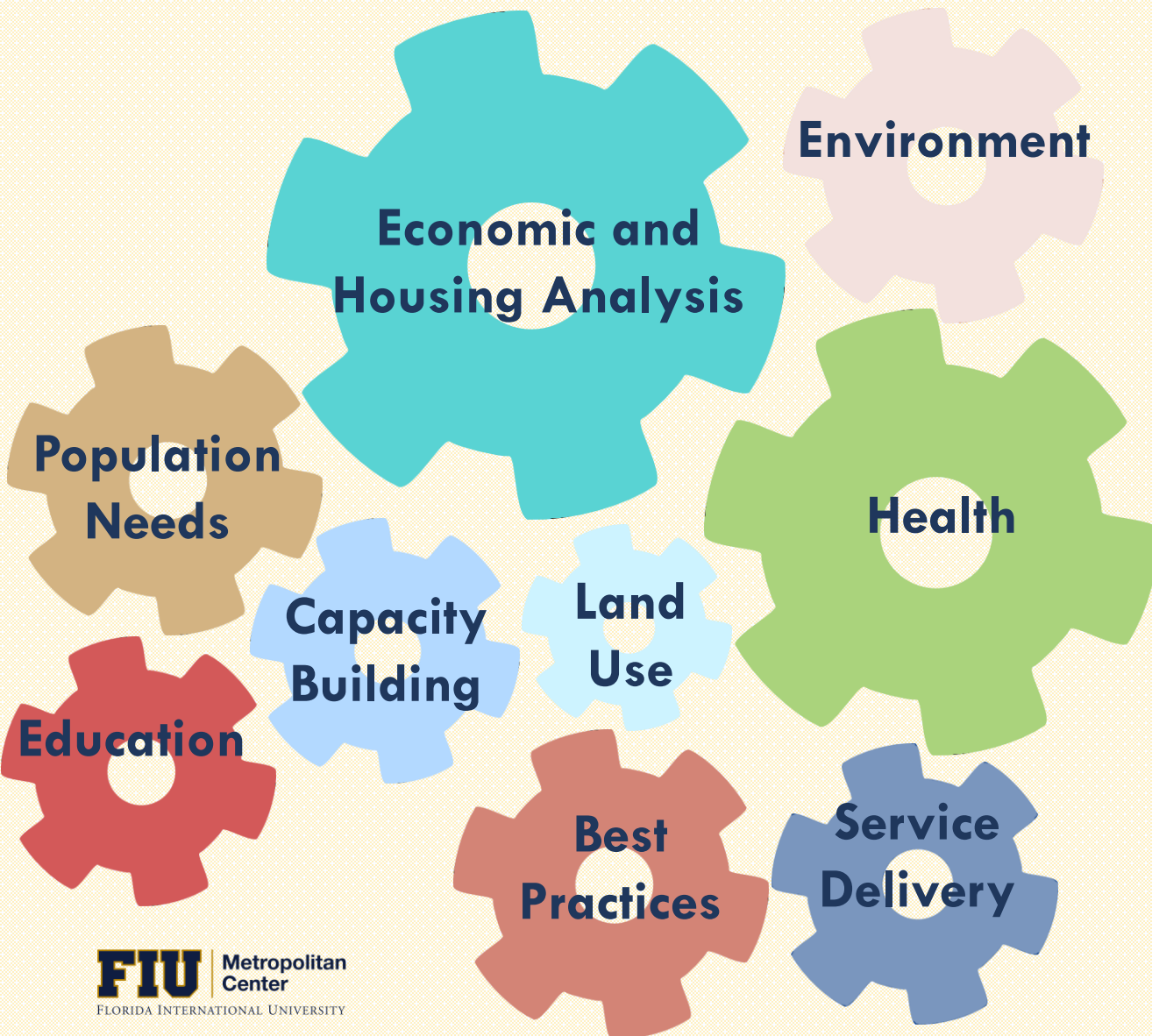
# Our Core Areas

## ❖ Training and Organizational Development

- ◆ customized to client needs and conducted either at our training facilities or onsite for the sponsoring agency
- ◆ trainers and course content are evaluated on an ongoing basis to assure relevance and quality
- ◆ provide performance auditing and process redesign to foster cost-effective, strategy-based service delivery
- ◆ trained over 5,000 local government and nonprofit employees throughout South Florida
- ◆ tailored for international training through our involvement with the Washington Mandela Fellows Program sponsored by the U.S. Department of State, which has brought over 100 young leaders from Africa to FIU during the summers of 2014 through 2017



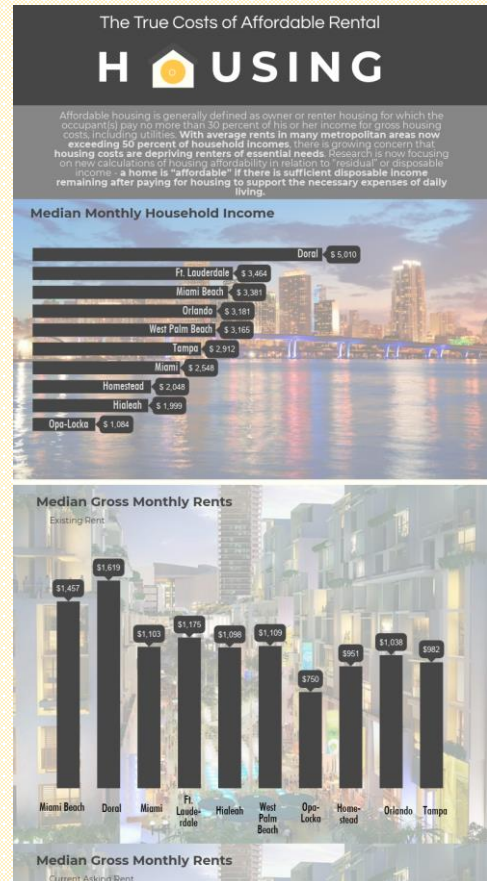
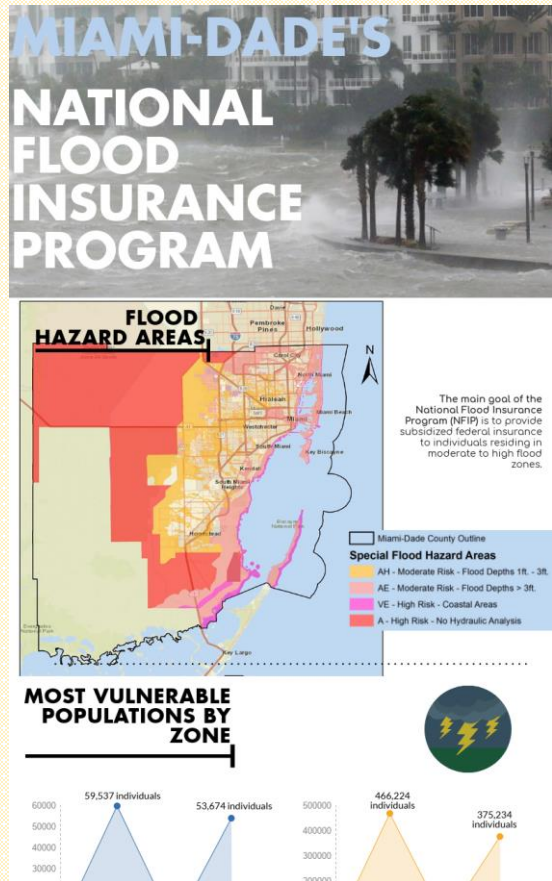
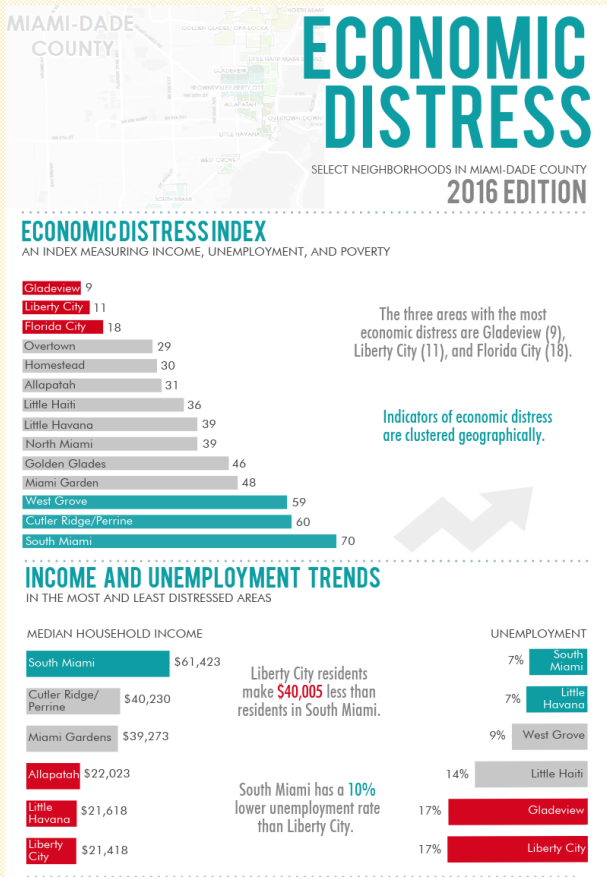
# Our Core Areas: How they fit together?



- ❖ **Sound public policy based on timely and reliable data**
- ❖ **Challenge is to identify and treat the root causes of urban problems**
- ❖ **Complex urban problems require solutions that understand and address their root causes in a holistic way and integrated approach**
- ❖ **Stress the interconnectedness of the local economy, quality of life, housing, transportation, natural environment, health and education**

# Our Core Areas

## ❖ Infographics







# Community Engagement

- ❖ Let's Talk About Unaffordable Miami
- ❖ Local Economic Development Tools & Techniques
- ❖ The Hurricane Threat: Issues in Coastal Vulnerability
- ❖ Stemming the Miami-Dade Brain Drain
- ❖ Annual State of the South Florida Economy (3 years)
- ❖ Healthcare Reform in South Florida

# FIU | Metropolitan Center

FLORIDA INTERNATIONAL UNIVERSITY

*Celebrating 20 Years*

Improving Public Policy and Quality of Life in South Florida



@SIPAMetropolitan



@FIUMetroCenter



FIU Metropolitan Center



@FIUMetroCenter