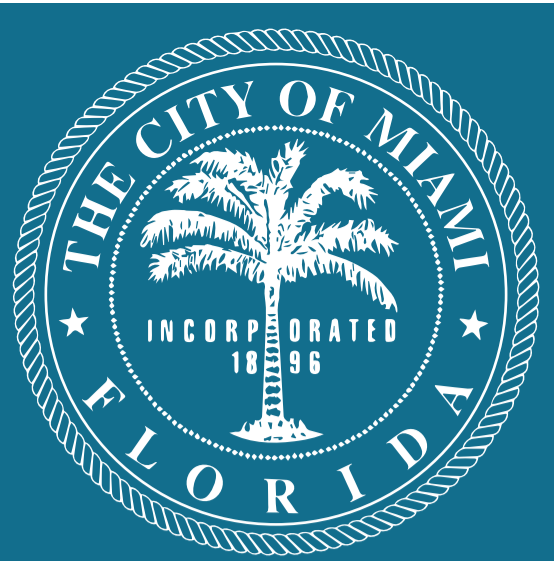
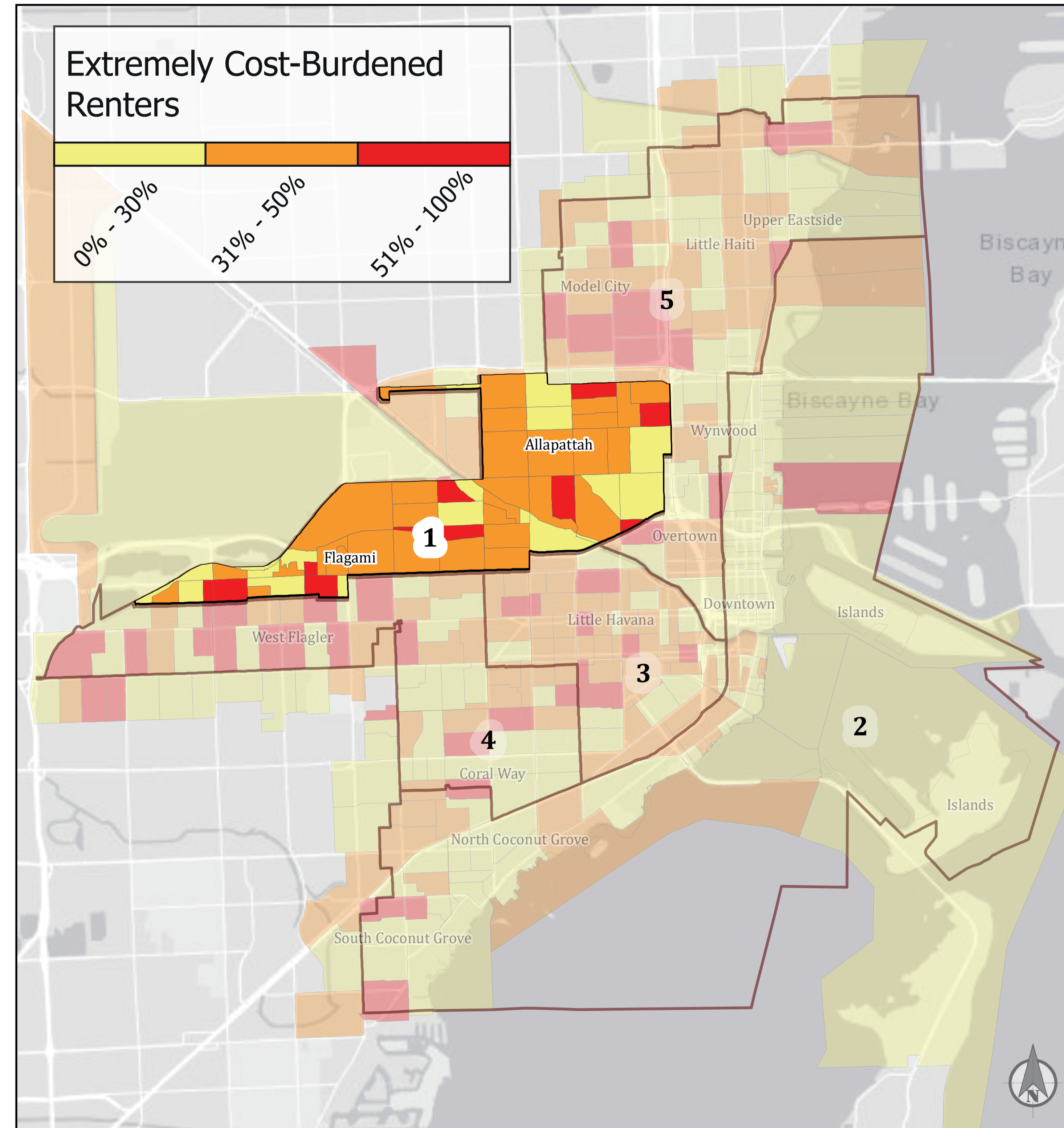
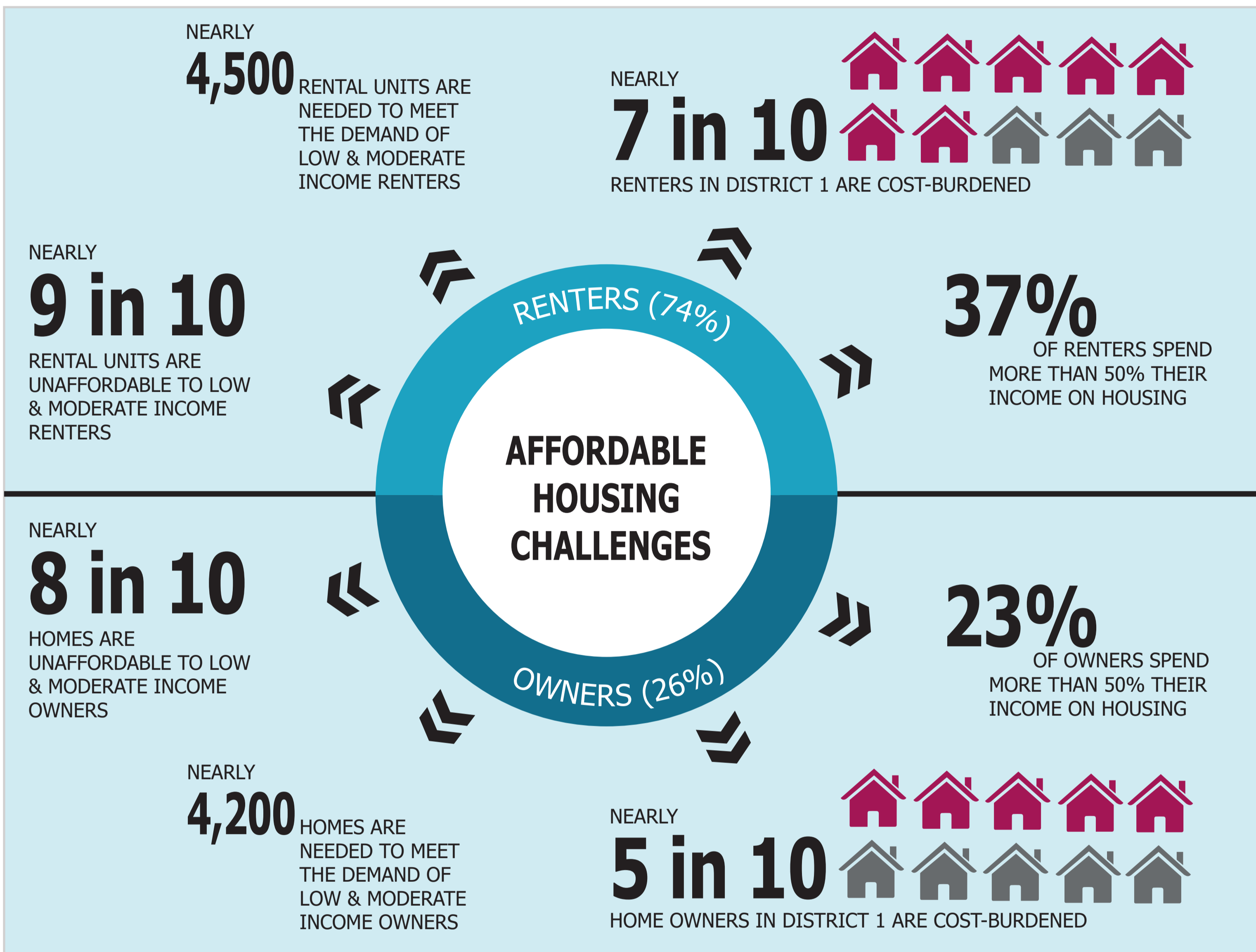


# District 1



## Why care about Affordable Housing?



## What does it mean for a resident?

### Lack of Disposable Income leads to:

- COST-BURDENED HOUSEHOLDS MAKE DIFFICULT CHOICES BETWEEN FOOD, MEDICAL BILLS, UTILITIES & OTHER NON-HOUSING EXPENSES
- RENTERS LIVE PAYCHECK-TO-PAYCHECK AND COULD BE ONE EMERGENCY AWAY FROM HOMELESSNESS
- SHRINKING CONTRIBUTIONS TO SAVINGS, INVESTMENT OPPORTUNITIES, AND RETIREMENTS ACCOUNTS
- REDUCTION OF COMMUNITY ECONOMIC VITALITY, MAKING AN AREA UNATTRACTIVE FOR POTENTIAL EMPLOYEES/EMPLOYERS AND CHALLENGING FOR EMPLOYEES/EMPLOYERS RETAINMENT

## Demographics

TOTAL NUMBER OF RESIDENTS: **85,146**

### BELOW POVERTY LEVEL:

CHILDREN: **40%**  
 WORKFORCE: **26%**  
 SENIORS: **38%**

A TYPICAL RESIDENT IS EMPLOYED IN SERVICE, SALE & OFFICE INDUSTRIES WITH AVERAGE ANNUAL EARNINGS RANGING FROM **\$21,600 TO \$32,400**

### RACE:

