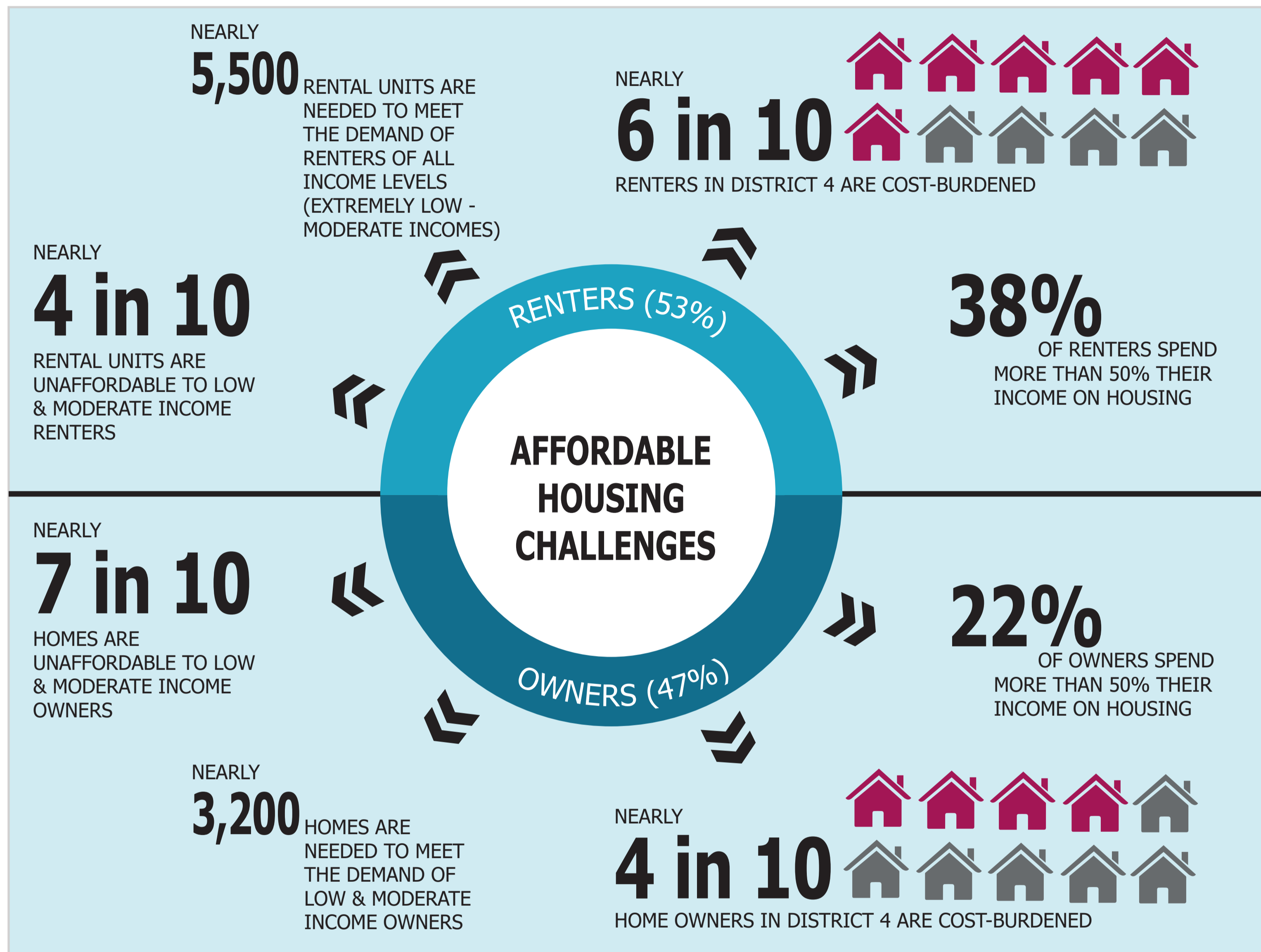


District 4



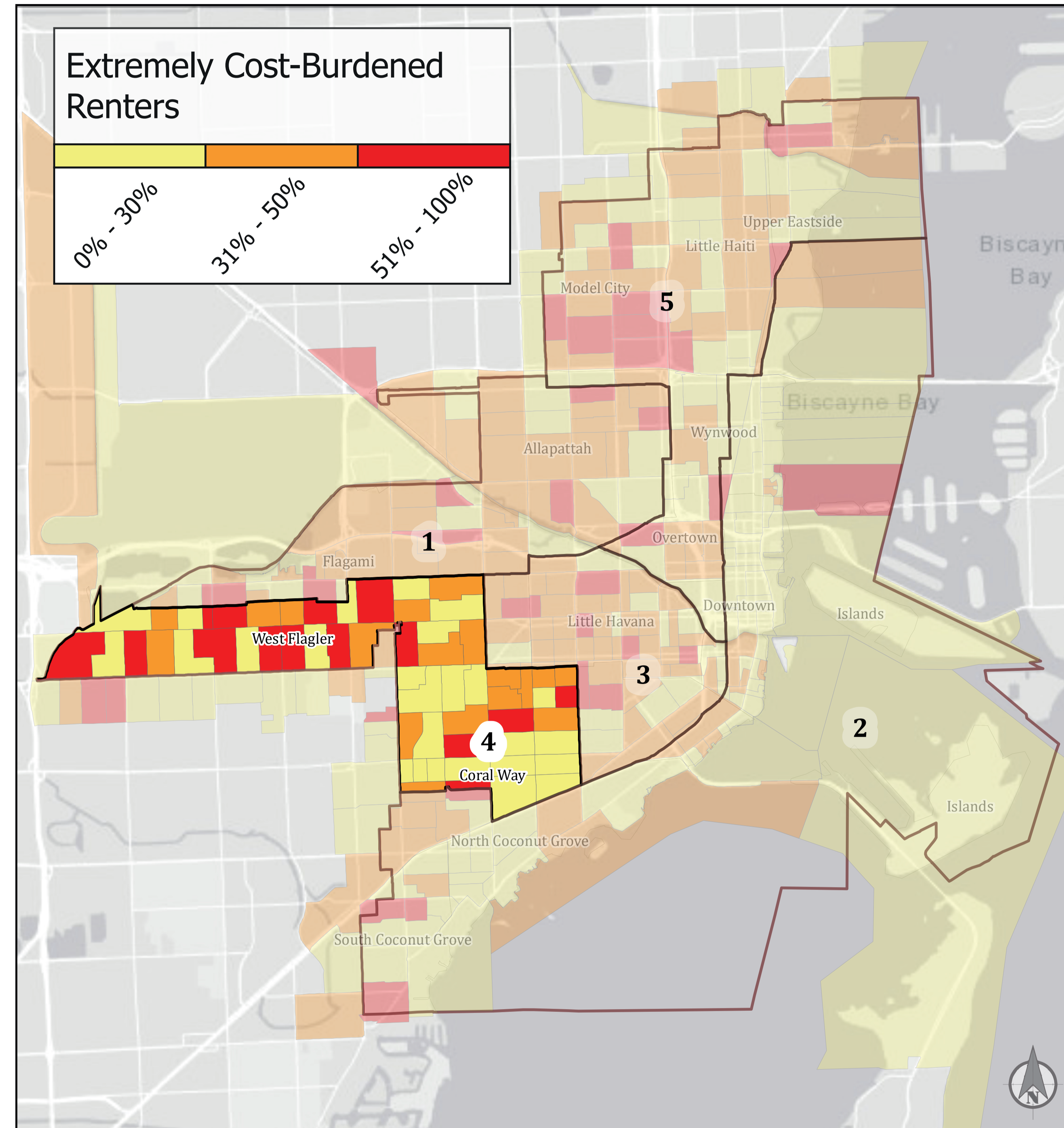
Why care about Affordable Housing?



What does it mean for a resident?

Lack of Disposable Income leads to:

- COST-BURDENED HOUSEHOLDS MAKE DIFFICULT CHOICES BETWEEN FOOD, MEDICAL BILLS, UTILITIES & OTHER NON-HOUSING EXPENSES
- RENTERS LIVE PAYCHECK-TO-PAYCHECK AND COULD BE ONE EMERGENCY AWAY FROM HOMELESSNESS
- SHRINKING CONTRIBUTIONS TO SAVINGS, INVESTMENT OPPORTUNITIES, AND RETIREMENTS ACCOUNTS
- REDUCTION OF COMMUNITY ECONOMIC VITALITY, MAKING AN AREA UNATTRACTIVE FOR POTENTIAL EMPLOYEES/EMPLOYERS AND CHALLENGING FOR EMPLOYEES/EMPLOYERS RETAINMENT



Demographics

TOTAL NUMBER OF RESIDENTS:

104,688

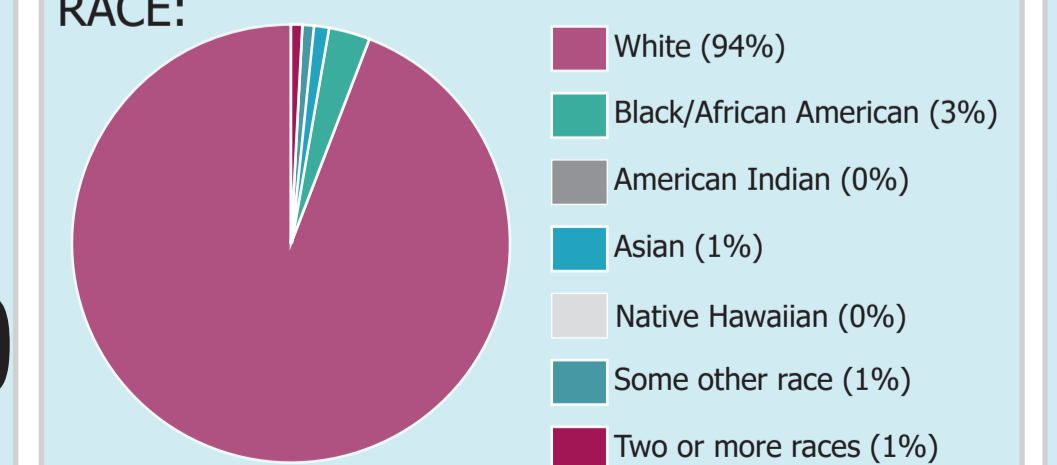
FAMILIES WITH CHILDREN LIVE BELOW POVERTY LEVEL

2.1%

A TYPICAL RESIDENT IS EMPLOYED IN MANAGEMENT, SALE & OFFICE INDUSTRIES WITH AVERAGE ANNUAL EARNINGS RANGING FROM

\$21,600 TO \$101,000

RACE:



Hispanic or Latino (94%)