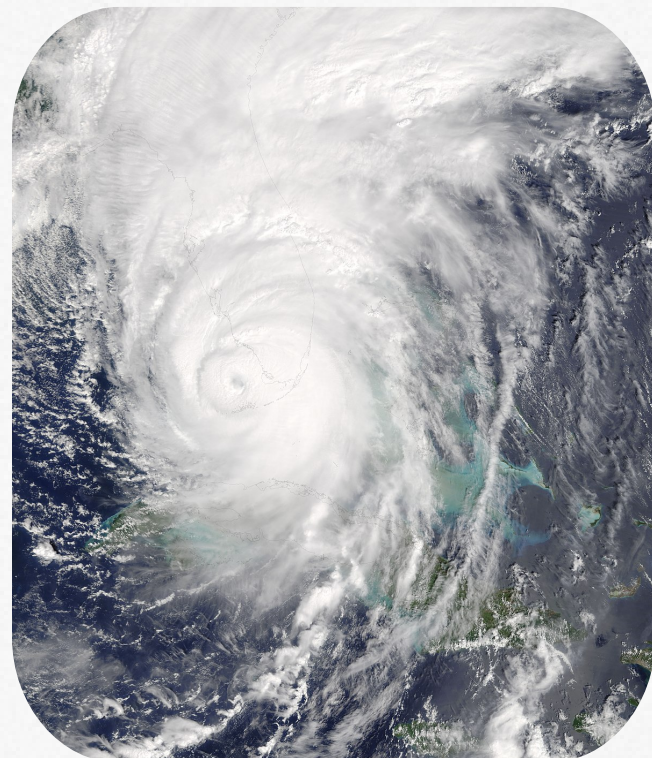


Hurricane Social Vulnerability Fact Sheet



Hurricane Irma over Florida



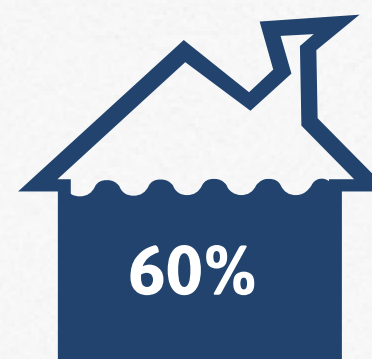
Mexico City, Florida after Hurricane Michael



Hurricane Flooding Miami

Housing Vulnerabilities

Housing built before 1990 is highly susceptible to hurricane damages. In 2017, there were over 5 million of these homes in Florida (that's almost 60% of all occupied homes!). In total, they are valued at \$6.7 Billion.

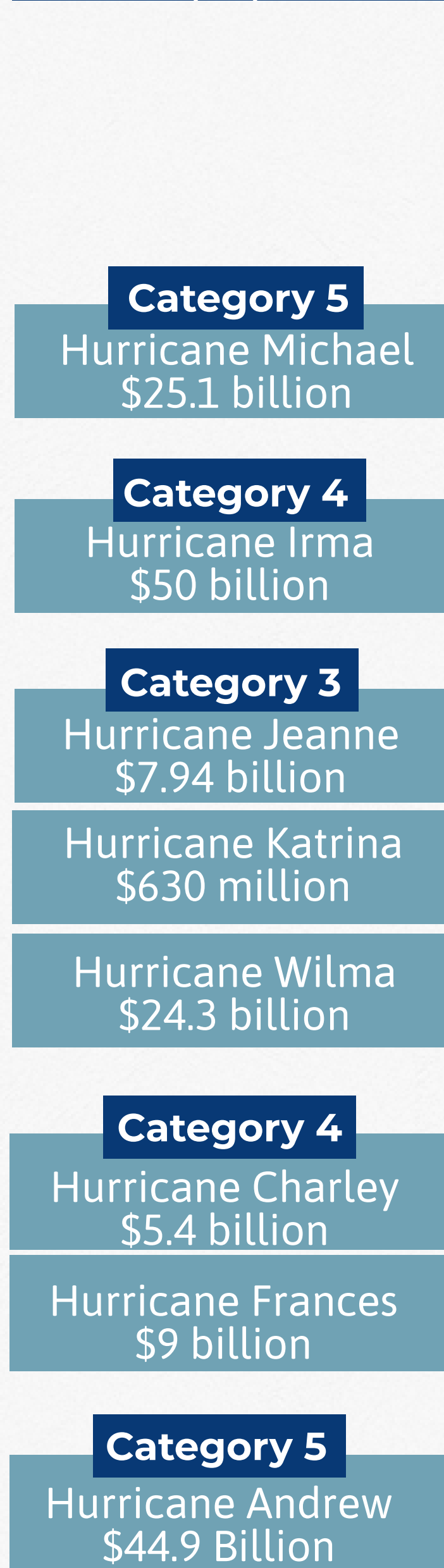


Social Vulnerabilities

Risks from environmental hazards depends largely on geography, socioeconomic status, and demographics. Characteristics like gender, low income, and language barriers can make a person more vulnerable to a storm because of lack of access to information resources and other factors.

	Florida	Miami Dade County	Broward County	Palm Beach County
Population	21,299,325	2,761,581	1,951,260	1,485,941
Population Growth Rate (2014-2018)	7.06%	3.75%	4.73%	6.07%
Persons over 65	4,146,743	460,931	100,124	341,631
Median Household Income	\$52,594	\$49,930	\$56,842	\$60,057
Median Worker Earnings	\$30,471	\$28,310	\$31,839	\$31,753

Hurricane Costs (FL)



Predicted # of Storms

