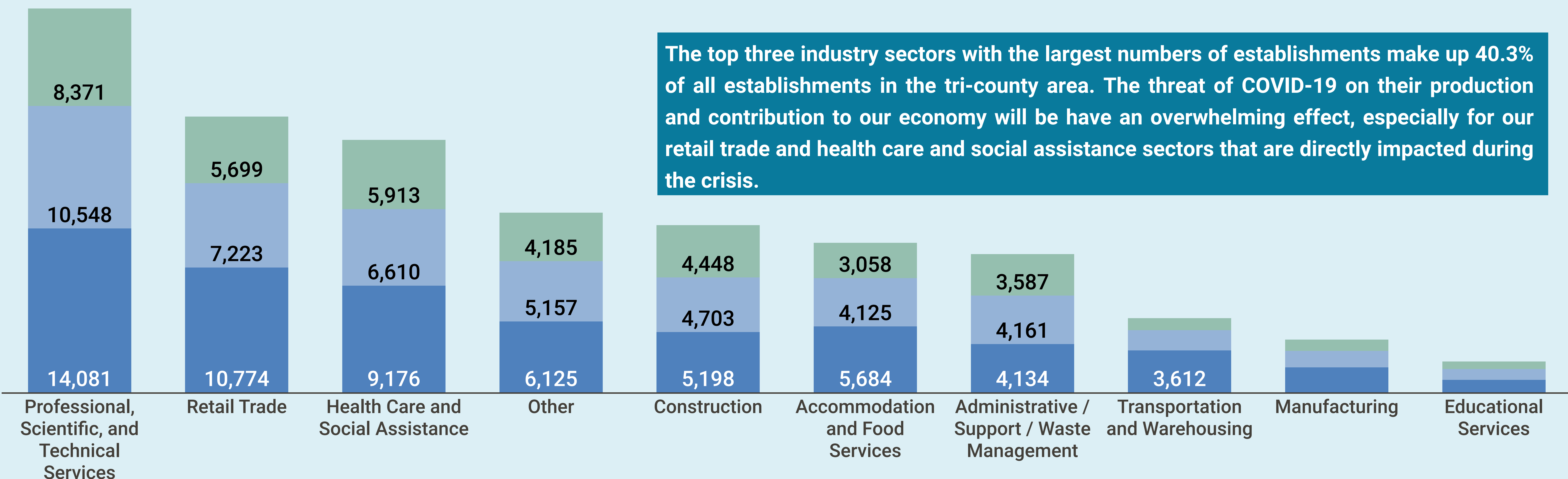


Impact of Coronavirus on South Florida's Top Ten Industry Sectors

According to the Federal Reserve, about 40% of Americans would struggle with an unexpected bill of \$400. The tourism centric, low-wage economy in South Florida is heavily dependent on hourly workers and service sector industries. With the closure of establishments, the impact of coronavirus (COVID-19) on the South Florida economy could be catastrophic as the rate of unemployment is predicted to rise over the coming weeks.

Number of Establishments, 2017

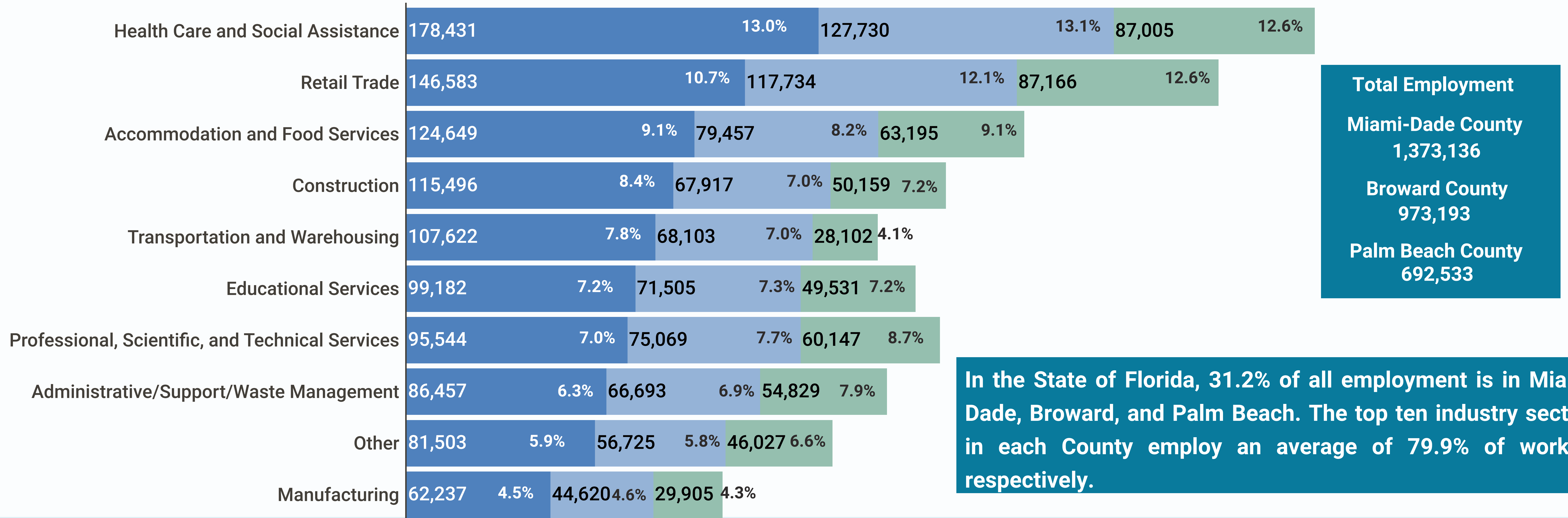
• Miami-Dade • Broward • Palm Beach



The top three industry sectors with the largest numbers of establishments make up 40.3% of all establishments in the tri-county area. The threat of COVID-19 on their production and contribution to our economy will have an overwhelming effect, especially for our retail trade and health care and social assistance sectors that are directly impacted during the crisis.

Employment, 2018

• Miami-Dade • Broward • Palm Beach



Total Employment
 Miami-Dade County
 1,373,136
 Broward County
 973,193
 Palm Beach County
 692,533

In the State of Florida, 31.2% of all employment is in Miami-Dade, Broward, and Palm Beach. The top ten industry sectors in each County employ an average of 79.9% of workers respectively.

Median Wages, 2018

Median Wages
 Miami-Dade County
 \$31 K
 Broward County
 \$35 K
 Palm Beach County
 \$35 K

Industry Sector	Miami-Dade	Broward	Palm Beach
Health Care and Social Assistance	\$ 32.1 K	\$ 36.6 K	\$ 39.6 K
Retail Trade	\$ 22.9 K	\$ 25.2 K	\$ 24.4 K
Accommodation and Food Services	\$ 21.5 K	\$ 20.7 K	\$ 19.5 K
Construction	\$ 30.5 K	\$ 32.2 K	\$ 40.0 K
Transportation and Warehousing	\$ 33.2 K	\$ 40.0 K	\$ 37.5 K
Educational Services	\$ 38.7 K	\$ 42.1 K	\$ 41.3 K
Professional, Scientific, and Technical Services	\$ 50.1 K	\$ 55.2 K	\$ 61.5 K
Administrative and Support and Waste Management	\$ 22.2 K	\$ 26.5 K	\$ 24.7 K
Other	\$ 20.9 K	\$ 26.0 K	\$ 25.2 K
Manufacturing	\$ 34.3 K	\$ 45.2 K	\$ 51.6 K