



# The Basics of OpenStreetMap



# FIU

Provided by:  
The Metropolitan Center  
(@FIUMetroCenter)

Daniela Waltersdorfer  
(@DWaltersdorfer)

Nohely Alvarez  
(@Tereisco)

# What is Geography?

- GE- Earth
- Graphy-Writing
- Cultural Geography
  - Deals with languages, culture, customs, religion, agriculture, transportation systems, political systems, economy, demographics...
- Physical Geography
  - Deals with features of the Earth
    - Water, air, animals, land, topography, atmosphere, biosphere, hydrosphere, lithosphere
- From these two:
  - Regional Geography leads to in-depth research of a particular region, including cultural and physical characteristics
  - Geographic Technologies includes Geographic Information Systems (GIS) and Global Positioning Systems (GPS) and may include a combination of cultural and physical geography.

# Why Maps Matter

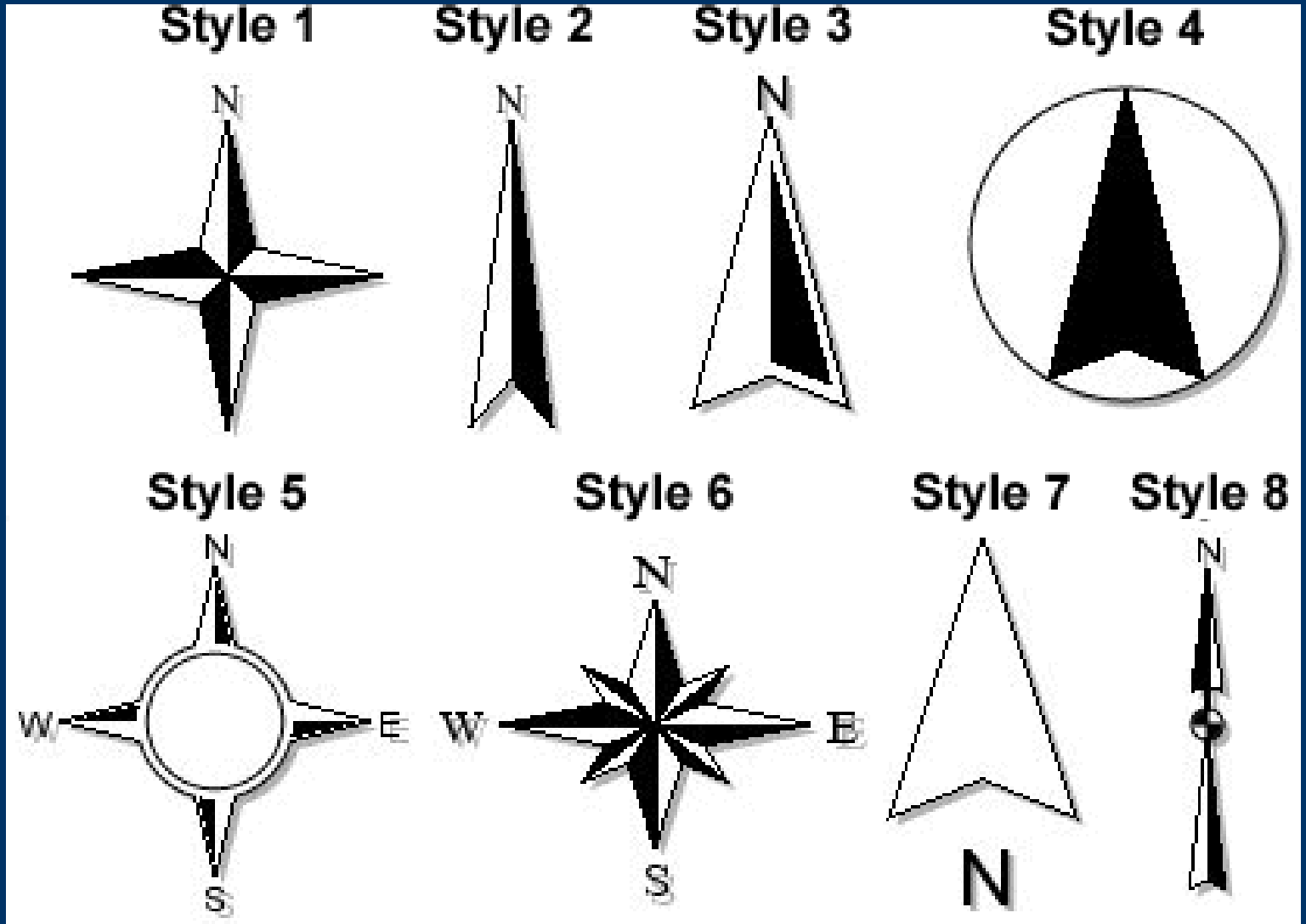
- Maps illustrate and communicate information of cultural and physical geography
- Data must be accurate in order to have right representation of it on a map
- Mistakes are easy to make
- Misrepresentation of maps
  - Watch for data (ask for data)
  - Geo-Tagging (Geographical location is representative of the data)



# Reading a Map

- Understand the orientation of the map
  - Which way is North?
  - Am I reading it right?
- Look for a legend
- Understand the scale of the map
  - i.e: 1:100,000
  - 1 unit illustrated in the map = 100,000 in real life
- Look at the boundaries of the area you are studying/researching
  - Neighboring countries (cities, neighborhoods, etc.), oceans, rivers, mountain ranges?

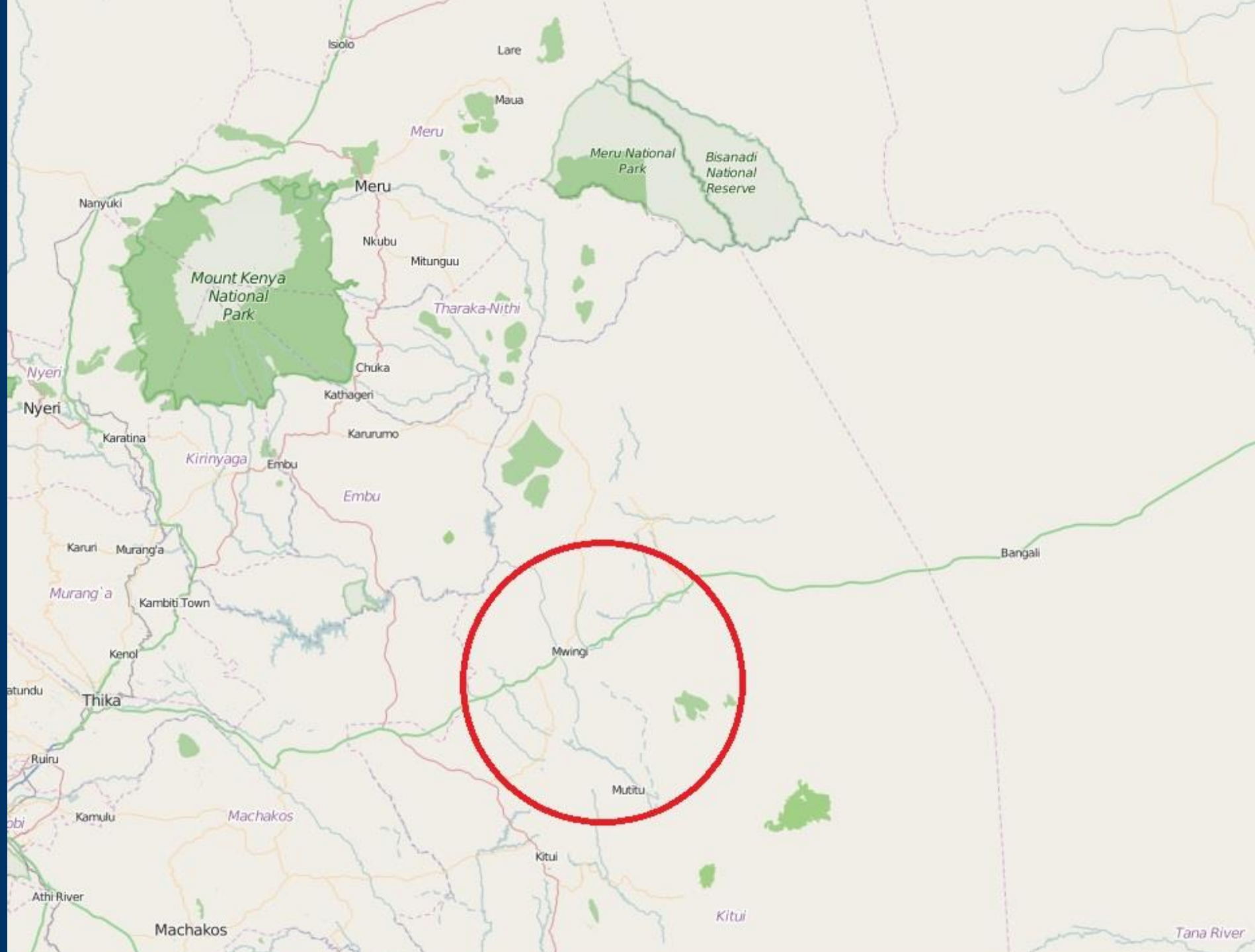
# Which way is up?



Trick to remember:  
Sun rises on the east  
Sun sets on the west

# Mwingi, Kenya

(Town in Kitui County)





Map Key ✕

- Motorway
- Trunk road
- Primary road
- Secondary road
- Unsurfaced road
- Track
- Byway
- Bridleway
- Cycleway
- Footway
- Railway
- Subway
- Light rail and tram
- Cable car and chair lift
- Airport Runway and taxiway
- Airport apron and terminal
- Administrative boundary
- Forest
- Wood
- Golf course
- Park
- Residential area
- Tourist attraction
- Common and meadow
- Retail area
- Industrial area
- Commercial area
- Heathland
- Lake and reservoir
- Farm
- Brownfield site
- Cemetery
- Allotments
- Sports pitch
- Sports centre
- Nature reserve
- Military area
- School and university
- Significant building
- Railway station
- Summit and peak
- Dashed casing = tunnel
- Black casing = bridge
- Roads under construction

Search

Where am I?

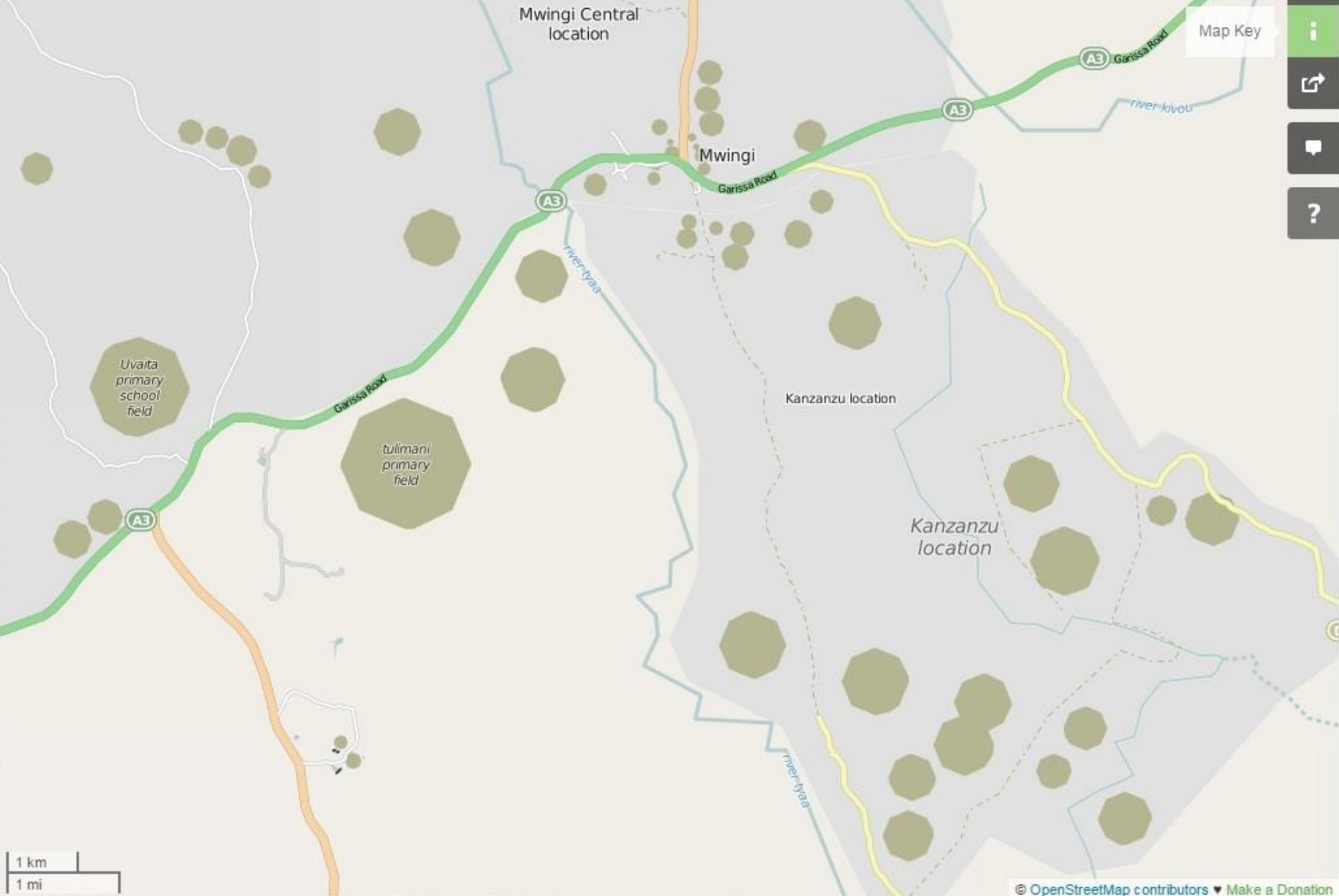
Go



Map Key



- Motorway
- Trunk road
- Primary road
- Secondary road
- Unsurfaced road
- Track
- Byway
- Bridleway
- Cycleway
- Footway
- Railway
- Subway
- Light rail and tram
- Cable car and chair lift
- Airport Runway and taxiway
- Airport apron and terminal
- Administrative boundary
- Forest
- Wood
- Golf course
- Park
- Residential area
- Tourist attraction
- Common and meadow
- Retail area
- Industrial area
- Commercial area
- Heathland
- Lake and reservoir
- Farm
- Brownfield site
- Cemetery
- Allotments
- Sports pitch
- Sports centre
- Nature reserve
- Military area
- School and university
- Significant building
- Railway station
- Summit and peak
- Dashed casing = tunnel
- Black casing = bridge
- Roads under construction







Casablanca, Morocco (scale)



Casablanca  
الدار البيضاء

Anfa  
أنفا

Hay el Hana

Méchouar de  
Casablanca

Aïn Sebaâ  
السبع عين

R 320

N1

N1

Sidi Moumen  
سیدی مومن

R 320

El Oulfa

Al Fida  
الغداة

A3

Aïn Chock

Ben M'Sick  
امسبک

Hay Panoramique

اس

Sbata  
سبانه

nouvelle ville  
Errahma

Hay Al Quds

Casablanca centre

Lahraouyine  
الهرأوس

R315

3 km  
1 mi

Aire de service Casablanca

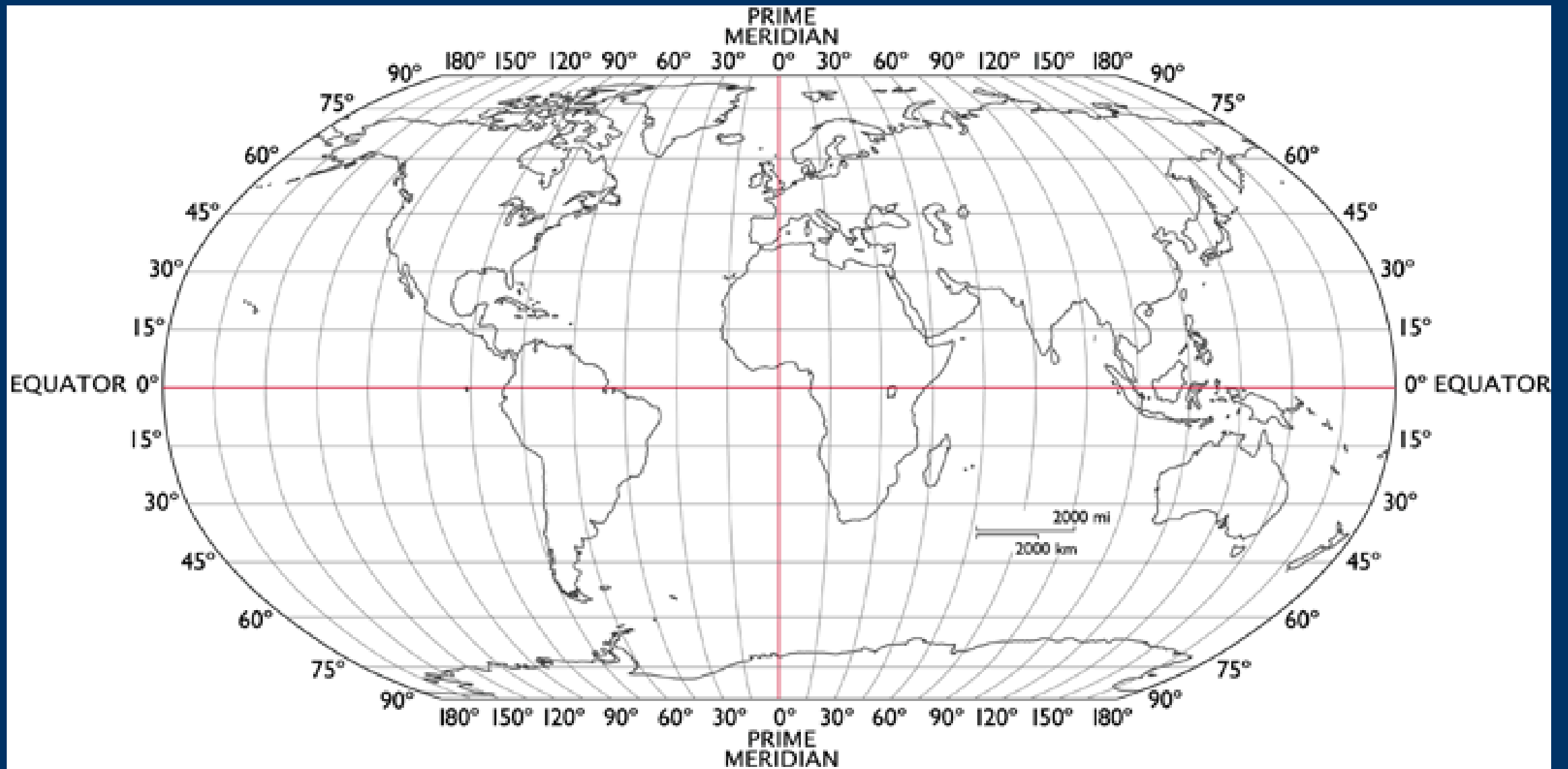
N1

# Cameroon is surrounded by:

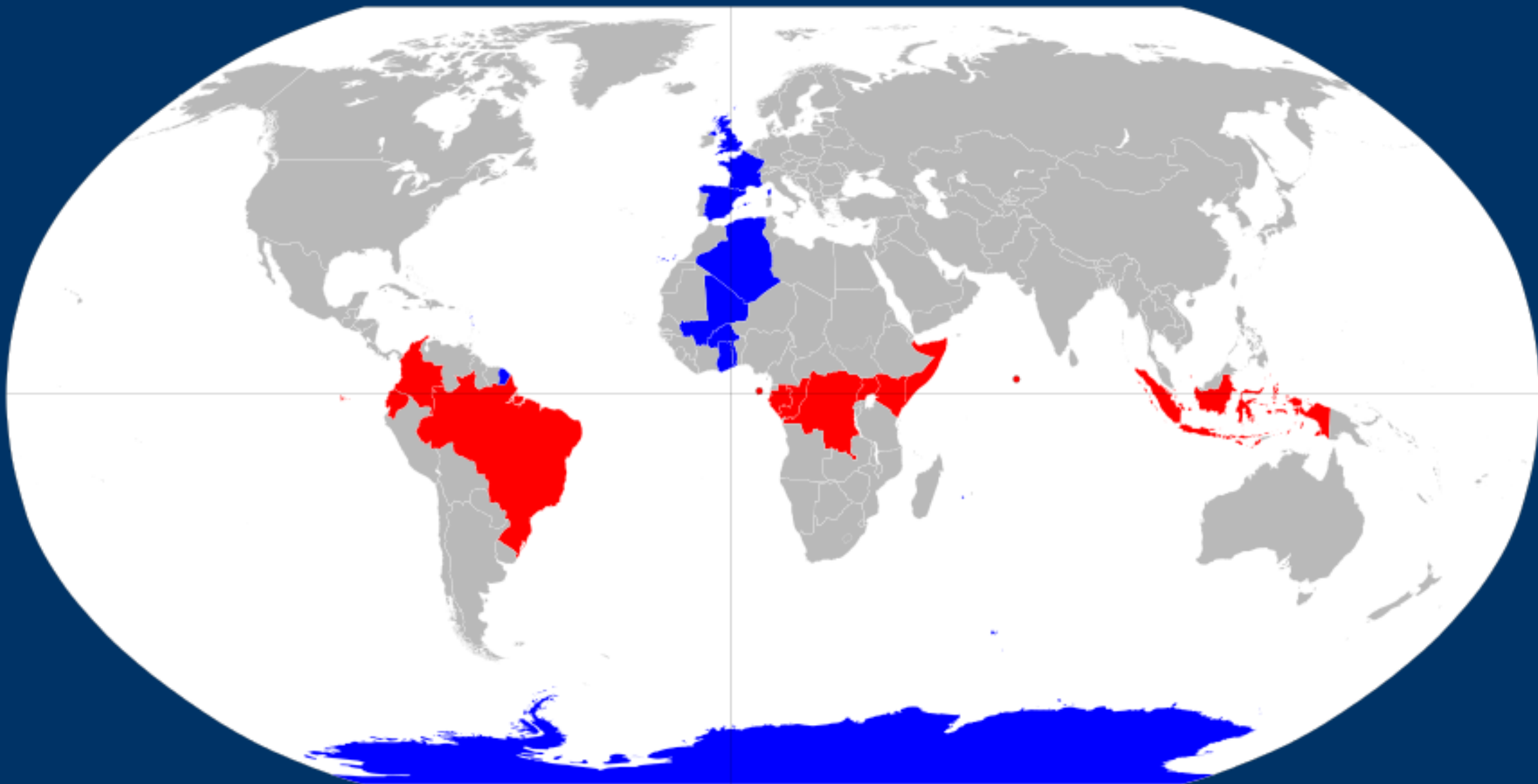
- Nigeria (West)
- Chad (Northeast)
- Central African Republic (East)
- Gabon (Southwest)
- Republic of Congo (South)
- Gulf of Guinea and Atlantic Ocean on its coast (West)



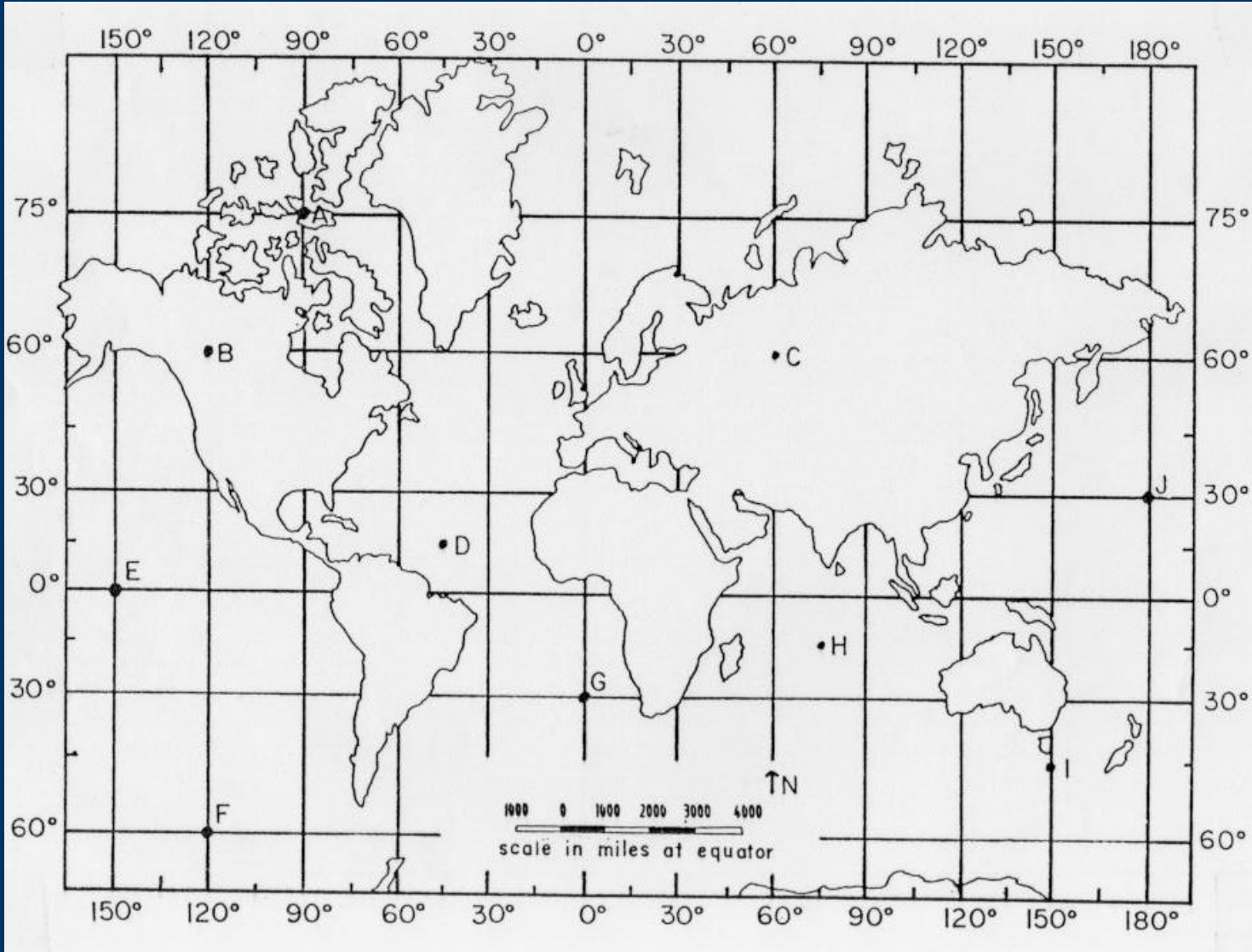
# Latitude and Longitude



# Latitude and Longitude



# Latitude and Longitude

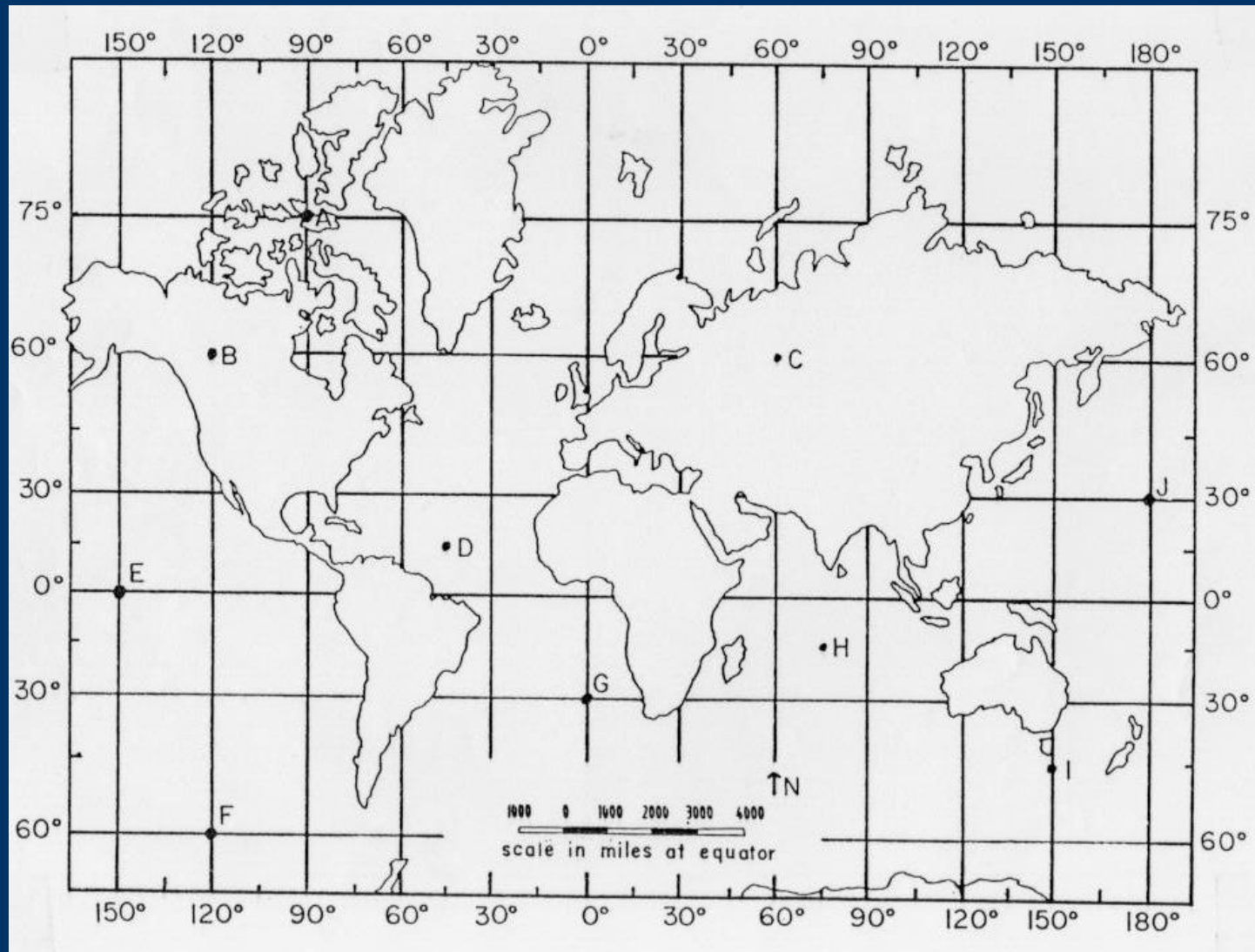


- Latitude is given before longitude
- The coordinates of the North and South Pole are 90.

CAN YOU FIND THE COORDINATES OF THESE POINTS?

A:  
B:  
C:  
D:  
E:  
F:  
G:  
H:  
I:  
J:

# Latitude and Longitude



A: 75N, 90W

B: 60N, 120W

C: 60N, 60E

D: 15N, 45W

E: 0, 150W

F: 60S, 120W

G: 30S, 0

H: 15S, 75E

I: 45S, 150E

J: 30N, 180